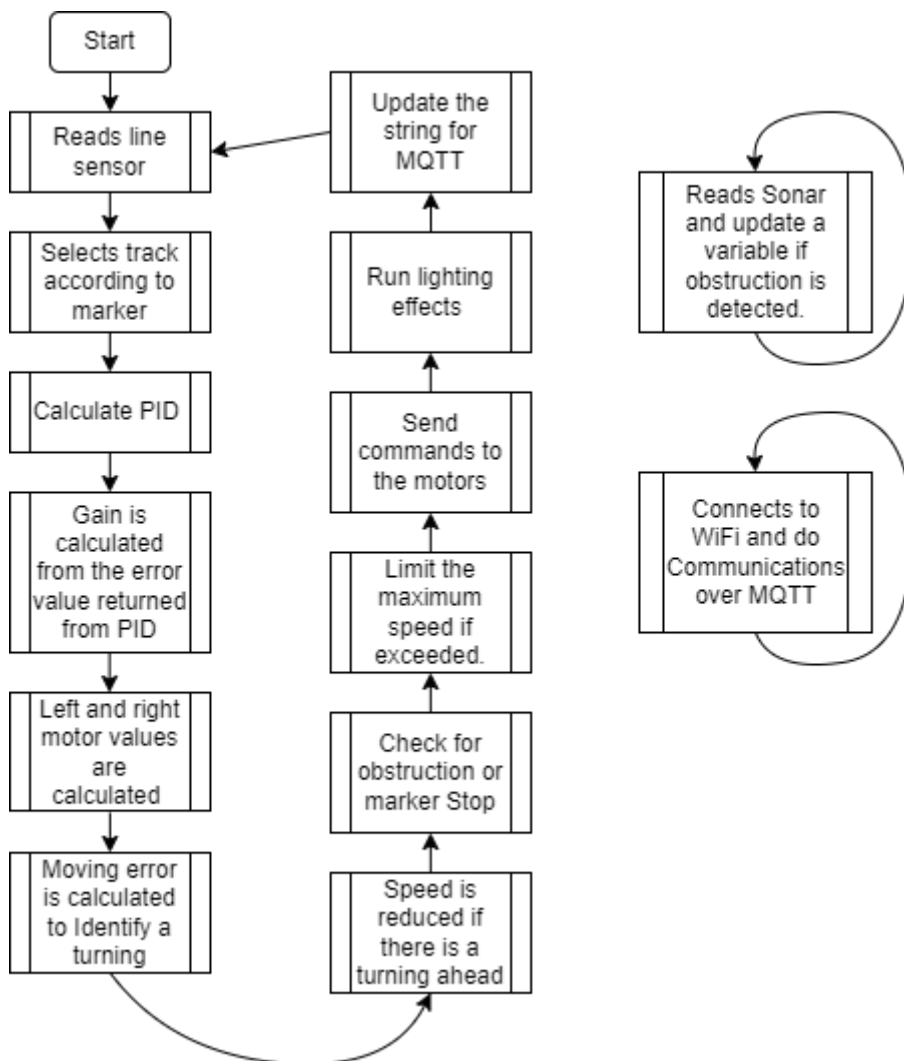


# Program Flow

## Basic Workflow:

Firmware is present in `affbotics_software/firmware/avg/ESP32_AGV_brain/src/main.cpp`

- Esp32 will connect to the wifi when booted
- It will read the line sensor and Ultrasonic sensor calculate the values and sends commands to the motor via Modbus



Am a Geek:

- WiFi ssid and password can be changed by editing `const char ssid[]` and `const char pass[]`
  - MQTT broker can be changed by editing the line `client.connect("esp32", "public", "public" ))` and `client.begin("public.cloud.shiftr.io", net);`
  - PID values can be tweaked by changing values of variables `kp, ki, kd`
- 

Revision #1

Created 11 March 2022 09:29:33 by Adarsh K

Updated 11 March 2022 09:51:46 by Adarsh K